



GMT MONTHLY MEMBERSHIP PROGRESS REPORT

Results as of: 6/30/2020

GMT Constitutional Area 5 - E, Group P

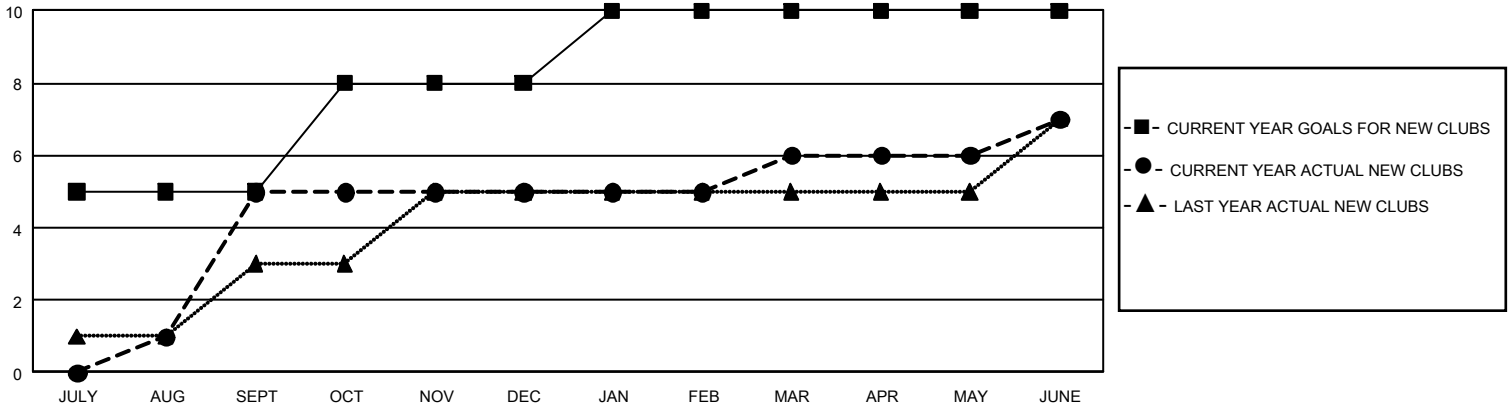
GMT: OPEN

REPORT DOES NOT INCLUDE CLUBS IN UNDISTRICTED AREAS.

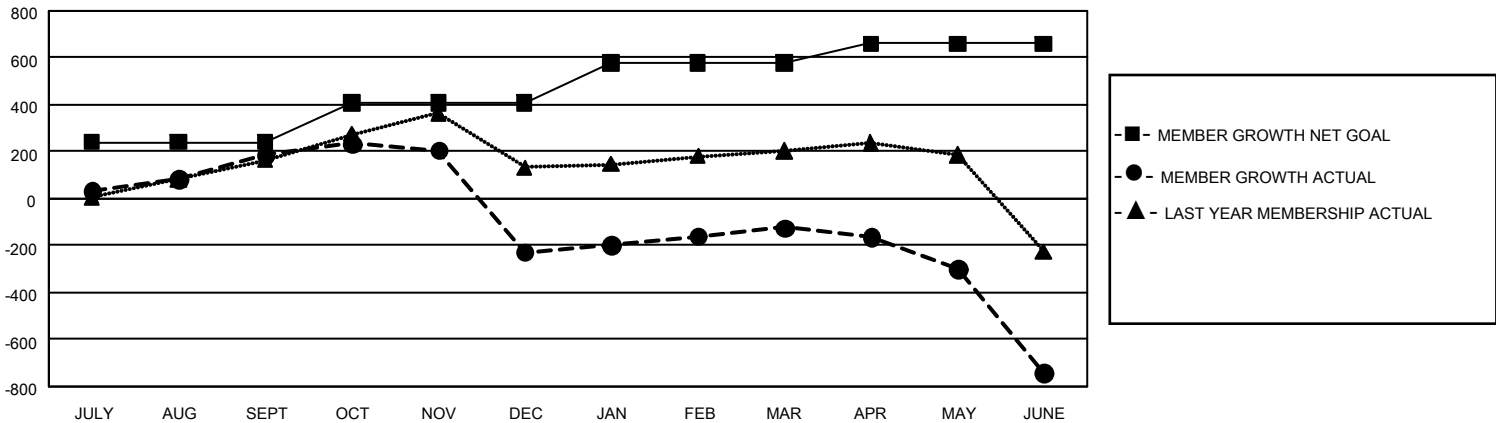
Clubs			
RESULTS FOR 2019-2020			
QUARTER	NEW CLUB GOAL	NEW CLUBS	DROPPED CLUBS
JULY/AUG/SEPT	15	5	0
OCT/NOV/DEC	9	0	2
JAN/FEB/MAR	6	1	2
APR/MAY/JUNE	0	1	0

Members			
RESULTS FOR 2019-2020			
QUARTER	MEMBER GROWTH NET GOAL	MEMBER GROWTH ACTUAL	DROPPED MEMBERS ACTUAL (including transfers)
JULY/AUG/SEPT	720	359	140
OCT/NOV/DEC	510	152	543
JAN/FEB/MAR	510	183	70
APR/MAY/JUNE	240	287	832

GOALS AND ACTUAL NEW CLUBS CUMULATIVE



GOALS AND ACTUAL MEMBERS CUMULATIVE



DROPPED CLUBS: 4	164 CLUBS OF 297 ADDED 1 OR MORE NEW MEMBERS	GENDER DISTRIBUTION	
		MALE 3,776 (52.67%)	FEMALE 3,393 (47.33%)
DROPPED MEMBERS		TOTAL FAMILY UNIT MEMBERS 405	
DECEASED 39	CLICK HERE FOR CUMULATIVE MEMBERSHIP DATA	FAMILY MEMBERS PAYING HALF DUES 219	
CLUB CANCELLED 49			
OTHER 1,497			
TOTAL 1,585			